

<b>SERT ELEKTRİK</b>	
<b>SU FİLTRE SİSTEMLERİ</b>	
	<b>SİLİPHOS FİLTRE KABI</b> ÇAMAŞIR MAK. VE ŞÖH BEN İÇİN
	<b>3/4" - 1" FİLTRE KABI</b> ŞEFFAF FİLTRE KABI
	<b>3/4" - 1" FİLTRE KABI</b> BEYAZ FİLTRE KABI
	<b>YIKANABİLİR KARTUŞ</b> PİSLİK TUTUCU KUM TUTAR
	<b>ELYAF İP KARTUŞ</b> PİSLİK KUM TUTAR
	<b>AKTİF KARBON</b> TAT VERİR KOKUSUNU ALIR
	<b>SİLİFOZ KABI</b>
	<b>SİLİFOZ</b> KİREÇLENMEYİ ÖNLER
	<b>3 LÜ FİLTRE SETİ</b> ŞEFFAF FİLTRE KABI
SUDAKİ PARTİKÜLÜ + KOKUYU + KİREÇLENMEYİ ÖNLER	
	<b>3 LÜ FİLTRE SETİ</b> BEYAZ FİLTRE KABI
SUDAKİ PARTİKÜLÜ + KOKUYU + KİREÇLENMEYİ ÖNLER	



# Siliphos<sup>®</sup>

The economical way to protect water systems against corrosion and scale

## What can SILIPHOS do for you?

Mostly natural waters cause damages in pipes, boilers and other installations. Some contain dissolved minerals, mainly calcium and magnesium salts. These types of water are called hard.

**Hard water** forms scale and corrosion in water systems. This leads to disadvantages and a higher energy demand. Clogged pipes may have to be replaced. Heating coils may overheat and fail.



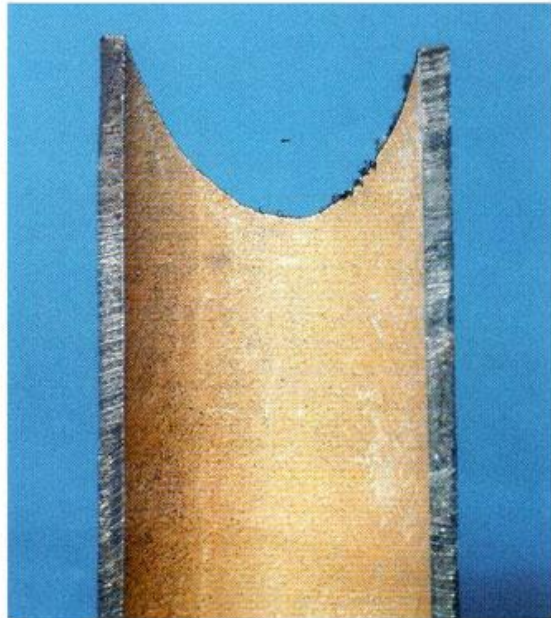
Copper pipe with scale plug.



Galvanized pipe heavily scaled.



Galvanized pipe heavily corroded.



Galvanized pipe, protected by SILIPHOS<sup>®</sup> as of installation.



# Siliphos®

**protects** water systems in hotels, public buildings, private households and industry against scale formation and corrosion

**prevents** "brown" water and clogged pipes

**saves** expensive repairs or even replacement of water pipes, boilers, heaters, cooling systems etc

**saves** energy and money

**extends** the life of water installations

## What is SILIPHOS?

SILIPHOS is an economic and reliable water treatment system for **potable** and **industrial** water. It is a glassy polyphosphate containing silicate. The application is done by dispensers of variable size.

**Soft water** is aggressive on metals and causes corrosion. Consequently the tap water turns brown. Leaks and burst pipes may be the results.

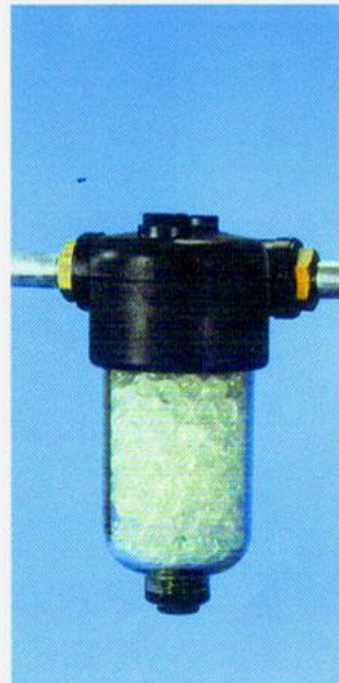
SILIPHOS prevents scale and stops corrosion. It utilizes the phenomenon that minute concentrations of polyphosphates are sufficient to inhibit the deposition of scale onto metallic surfaces. Because of its phosphate and silicate content SILIPHOS also inhibits corrosion by forming a thin protective layer on the metal surface. A SILIPHOS concentration of 2 – 3 ppm is sufficient to achieve **both** of these effects. SILIPHOS will also slowly remove existing scale in old pipes, even iron oxide and  $\text{CaCO}_3$  layers to some extent.

Experience shows that scale and corrosion is not only found in galvanized but also in copper pipes (see picture on page 3). Even in plastic pipes one can find scale and deposits.

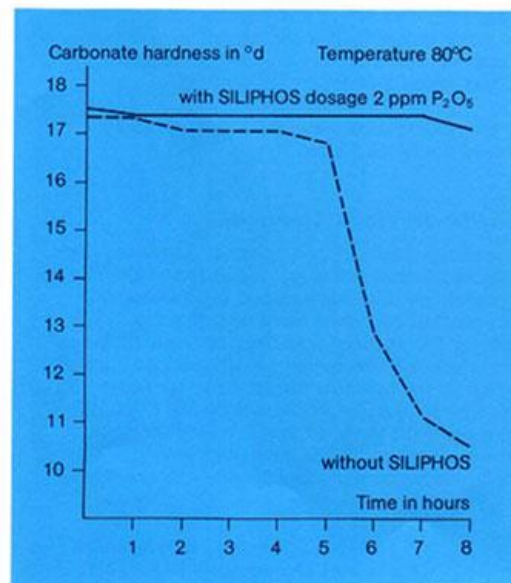
As a rule of thumb one can say that 1 mm scale on the heating coils of a boiler, increases the energy cost by 15 %.

SILIPHOS consists of 100 % active substance. The use in tap water and other types of fresh water at the prescribed dosage is **inoffensive**. The components of SILIPHOS comply with FAO/WHO standards. SILIPHOS II is certified to NSF – Standard 60, USA.

SILIPHOS also complies to FDA and ECM Regulations of 05.12.1989 and the German Regulation for potable water of 12.12.1990.



3 kg dispenser for household.



Stabilisation of hardness under the influence of heat.